

Stabbursnes nature reserve

Porsanger Municipality, Finnmark





Large mudflats

Stabbursnes is a large delta of glacialfluvial deposits. On the delta surface there are several fossil river tracts and ancient shore lines, which document the gradual upheaval of the land after the last glacial period. The large headland of glacialfluvial depositions were created by the river and land upheaval. Both north and south of the headland are large seashore- and mudflat areas. The surrounding fjord is very shallow and the nature reserve comprises some of the largest continuous low-tide areas in Norway.

Stabbursnes nature reserve

The Stabbursnes nature reserve was established in 1983. The reserve covers an area of 16 km², of which approximately 2.3 km² is dry land.

The purpose of the protection is:

- To secure a wetland area of international importance as a staging and breeding area for several species of ducks, geese and waders.
- To secure a large, continuous sea shore meadow with arctic plants and plant communities

The Ramsar convention

The Ramsar convention was the first international agreement with focus on wetland birds and important wetland sites. The negotiations took place in the city Ramsar in Iran in 1971, where representatives from 18 governments participated. Through the Ramsar convention Norway has committed itself to appoint wetland sites of International importance to the Ramsar list. The Stabbursnes nature reserve was appointed 24.7.1985 and is one of 37 Norwegian Ramsar sites.





Hippuris tetraphylla



Puccinellia phryganodes



Bar-tailed
Godwit



Ruff



Peregrine



Knot

Special plant life

The vegetation at Stabburnes is characterized by the large continuous sea shore meadow with salt tolerant plant species. Within the reserve we find some of the largest salt and brackish marshes in Northern Norway, with different arctic plant communities. The largest marshes can be found at the Valdakmyra on the south side of the Stabburnes headland and north of the river outlet.

What makes the Stabburnes area so important for protection is that it contains all the most important arctic plant communities to be found in the sea shore meadows in Finnmark. The arctic grass *Puccinellia phryganodes* dominates the vegetation on the salt marshes at Valdakmyra. Another characteristic plant is the fourleaf mare's-tail *Hippuris tetraphylla* that grows in the ponds at the meadows.

Rich birdlife

The inner parts of the Porsanger Fjord, with its large areas of beaches, mud flats, shallow water, river outlets, islets, straits and tidal currents, is one of the most important wetland areas for birds in Norway. The Stabburnes nature reserve comprises the most important parts of this system. Ducks, geese and waders use the area, which is important as a staging site during migration and as breeding site for numerous waders. During winter it is especially important for eider ducks. The large sea shore meadows are important for staging ducks and geese.

Many waders feed on the vast mud flats during migration. Among the most spectacular sights are the high numbers of the arctic wader Knot *Calidris canutus*, which occurs in flocks up to 35 000 individuals in the last half of May. Together with Balsfjorden in Troms County, the Porsanger Fjord is the only place in Norway where such impressive flocks can be seen.

The shallow areas are used by mergansers and diving ducks. The Common Eider *Somateria mollissima* occurs throughout the year, but in highest numbers during autumn and early winter when 5-10 000 can be seen. Other birds use the area mainly during spring migration and during moult (when wing feathers are shed and new are grown) in summer.

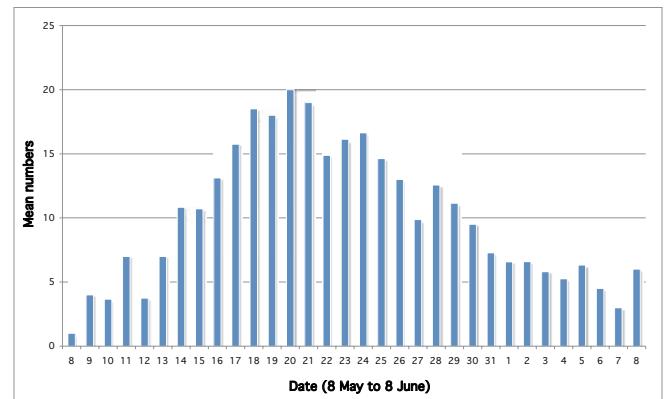


Lesser White-fronted Goose

Lesser White-fronted Goose

The nature reserve is of utmost importance for the rare and endangered Lesser White-fronted Goose *Anser erythropus*, because the flock staging each year at the Valdakmyra accounts for the major part (appr. 80%) of the remaining Fennoscandian population. The Lesser White-fronted Goose was a common breeder from the mountains of Børgefjell in Nordland to East-Finmark, but occurs today only in a few places at Finnmarksvidda. The remaining population in Fennoscandia is estimated at only 15-20 pairs (by 2007). The reason for the strong negative population development is the heavy hunting of the species along the migration routes and in the wintering areas in Southeaster Europe, but especially in Russia and Kazakhstan.

The lesser white-fronted geese arrive at the Valdakmyra in mid May and leave for the breeding areas at Finnmarksvidda in the end of May and beginning of June. The geese return to the marshes in the second half of August. They then stay until mid September. All traffic is prohibited in the staging periods in order to protect the geese. Valdakmyra is the only locality in Europe where it is easy to see the Lesser White-fronted Goose during spring migration. From the bird watching cabin you'll get a good overview of the marshes and the staging geese.



The figure shows the occurrence of staging Lesser White-fronted Goose at the Valdakmyra during spring, with average of daily maximum numbers (8 May to 8 June) for the years 2000-2007.

Bird watching

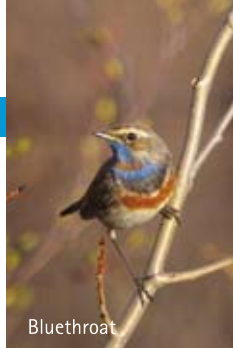
A bird watching cabin with a nice view of the Valdakmyra (see map) is situated on the south side of the Stabburnses. It is open from spring to autumn. Information about the nature reserve, the Lesser White-fronted Goose and other interesting species in the area can be found within the cabin.

Common species in Stabburnes nature reserve and surroundings:

Norwegian	English	Latin	Status	Max. numbers	Time
Sædgås	Bean Goose	<i>Anser fabalis</i>	staging	150	May, June
Dverggås	Lesser White-fronted Goose	<i>Anser erythropus</i>	staging	35	medio May, medio August
Grågås	Greylag Goose	<i>Anser anser</i>	staging	100	May-September
Gravand	Shelduck	<i>Tadorna tadorna</i>	breeding	35	May-September
Ærfugl	Common Eider	<i>Somateria mollissima</i>	breeding	6 000	year round
Laksand	Goosander	<i>Mergus merganser</i>	staging	2 000	May-September
Siland	Read-breasted Merganser	<i>Mergus serrator</i>	staging	100	April-October
Vjørre	Velvet Scoter	<i>Melanitta fusca</i>	staging	50	May-September
Svartand	Common Scoter	<i>Melanitta nigra</i>	staging	200	May-September
Krikkand	Teal	<i>Anas crecca</i>	staging	50	May-September
Stokkkand	Mallard	<i>Anas platyrhynchos</i>	staging	50	May-October
Brunnakke	Wigeon	<i>Anas penelope</i>	staging	500	May-October
Stjertand	Pintail	<i>Anas acuta</i>	staging	100	May-September
Tjeld	Oystercatcher	<i>Haematopus ostralegus</i>	breeding	300	April-October
Sandlo	Ringed Plover	<i>Charadrius hiaticula</i>	staging	200	May-September
Heilo	Golden Plover	<i>Pluvialis apricaria</i>	staging	100	April-October
Vipe	Lapwing	<i>Vanellus vanellus</i>	breeding	20	April-October
Polarsnipe	Knot	<i>Calidris canutus</i>	staging	35 000	May
Myrsnipe	Dunlin	<i>Calidris alpina</i>	staging	500	May-September
Temmincksnipe	Temmincs Stint	<i>Calidris temminckii</i>	breeding	100	May-September
Dvergsnipe	Little Stint	<i>Calidris minuta</i>	breeding	100	May-September
Rødstilk	Redshank	<i>Tringa totanus</i>	breeding	50	May-October
Gluttsnipe	Greenshank	<i>Tringa nebularia</i>	breeding	10	May-September
Grønnstilk	Wood Sandpiper	<i>Tringa glareola</i>	breeding	10	May-September
Sotsnipe	Spotted Redshank	<i>Tringa erythropus</i>	staging	20	May-September
Lappsbove	Bar-tailed Godwit	<i>Limosa lapponica</i>	staging	4 000	May-September
Kvartbekkasin	Jack Snipe	<i>Lymnocyptes minimus</i>	breeding	2	May-July
Enkeltbekkasin	Common Snipe	<i>Gallinago gallinago</i>	breeding	5	May-September
Brushane	Ruff	<i>Philomachus pugnax</i>	breeding	200	May-September
Storspove	Curlew	<i>Numenius arquata</i>	breeding	10	April-October
Tyvjo	Parasitic Skua	<i>Stercorarius parasiticus</i>	breeding	10	May-September
Fjelljo	Longtailed Skua	<i>Stercorarius longicaudus</i>	migration	10	May-September
Svartbak	Great Black-backed Gull	<i>Larus marinus</i>	breeding	100	year round
Gråmåke	Herring Gull	<i>Larus argentatus</i>	breeding	100	year round
Sildemåke	Lesser Black-backed Gull	<i>L. f. fuscus</i> & <i>L. f. intermedius</i>	breeding	10	April-October
Fiskemåke	Common Gull	<i>Larus canus</i>	breeding	500	year round
Hettemåke	Black-headed Gull	<i>Larus ridibundus</i>	staging	50	April-October
Rødnebbterne	Arctic Tern	<i>Sterna paradisaea</i>	migration	10 000	May-September
Jordugle	Short-eared Owl	<i>Asio flammeus</i>	migration	2	May-September
Dvergfalk	Merlin	<i>Falco columbarius</i>	breeding	5	May-September
Vandrefalk	Peregrine	<i>Falco peregrinus</i>	hunting	5	April-October
Havørn	White-tailed Eagle	<i>Haliaeetus albicilla</i>	breeding	30	year round
Rødvingetrost	Redwing	<i>Turdus iliacus</i>	breeding	50	May-September
Blåstrupe	Bluethroat	<i>Luscinia svecica</i>	breeding	20	May-September
Løvsanger	Willow Warbler	<i>Phylloscopus trochilus</i>	breeding	20	May-September
Bjørkefink	Brambling	<i>Fringilla montifringilla</i>	breeding	20	May-September
Linerle	Pied Wagtail	<i>Motacilla alba</i>	breeding	100	May-September
Heipiplerke	Meadow Pipit	<i>Anthus pratensis</i>	breeding	100	May-September

Rare species in Stabburnes nature reserve and surroundings:

Norwegian	English	Latin	Status	Max. numbers	Time
Praktærfugl	King Eider	<i>Somateria spectabilis</i>	staging		year round
Stellerand	Steller's Eider	<i>Polysticta stelleri</i>	staging		year round
Rødhodeand	Red-crested Pochard	<i>Netta rufina</i>	staging		spring
Snadderand	Gadwall	<i>Anas strepera</i>	staging		spring
Svarthalespove	Black-tailed Godwit	<i>Limosa limosa</i>	staging		spring
Fjellmyrloper	Broad-billed Sandpiper	<i>Limicola falcinellus</i>	staging		spring, fall
Alaskasnipe	Pectoral Sandpiper	<i>Calidris melanoto</i>	staging		spring, fall
Jaktfalk	Gyr Falcon	<i>Falco rusticolus</i>	hunting		year round
Snøugle	Snowy Owl	<i>Nyctea scandiaca</i>	staging		year round
Lappiplerke	Red-throated Pipit	<i>Anthus cervinus</i>	staging		spring, summer, fall



Bluethroat



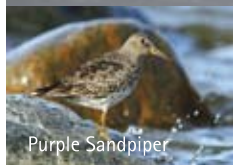
Arctic Tern



Wood Sandpiper



Short-eared Owl



Purple Sandpiper



Lesser White-fronted Goose



Knot



Lapwing



Rules and regulations

- In a part of the reserve all traffic is prohibited from 1 May to 30 June and from 10 August to 20 September (see map).
- Use of motorized vehicles is prohibited.
- It is prohibited to camp, raise tents or camouflage arrangements in the reserve.
- The area is protected against any activity that may change or disturb the natural environment.
- Hunting is not allowed except hunting of red fox in the period 1 October – 1 April and seals in the period 1 December – 1 April.
- Dogs must be kept on a leash.
- All plant life is protected. You may, however, pick berries and mushrooms.
- The wildlife is protected against any harm and unnecessary disturbance.
- Fishing is allowed following existing rules and regulations.



For more information about the protected area

Stabburnsnes Naturhus og Museum
N-9710 Indre Billefjord
tel 78 46 47 65
stabburs@online.no

The reserve is managed by

The Office of the Finnmark County Governor,
Dept. of Environmental Affairs
N-9815 Vadsø
tel 78 95 03 00 · fax 78 95 03 70
postmottak@fmfi.no

Local contact:

Statens naturoppsyn
N-9711 Lakselv
tel 91 62 20 03

More information

www.museumsnett.no/stabburnsnes
www.fylkesmannen.no
www.birdlife.no/prosjekter/dverggaas.php
www.piskulka.net

The brochure is published by: The Office of the County Governor,
Dept. of Environmental Affairs
Preparation, idea and layout: Stabburnsnes Naturhus og Museum/Tone Iselin Persen
Photos: Tomas Aarvak, Ingar Jostein Øien, Tone Iselin Persen, Gry Ingebretsen,
Morten Ekker, Geir Helge Systad.



OFFICE OF THE FINNMARK COUNTY GOVERNOR

